



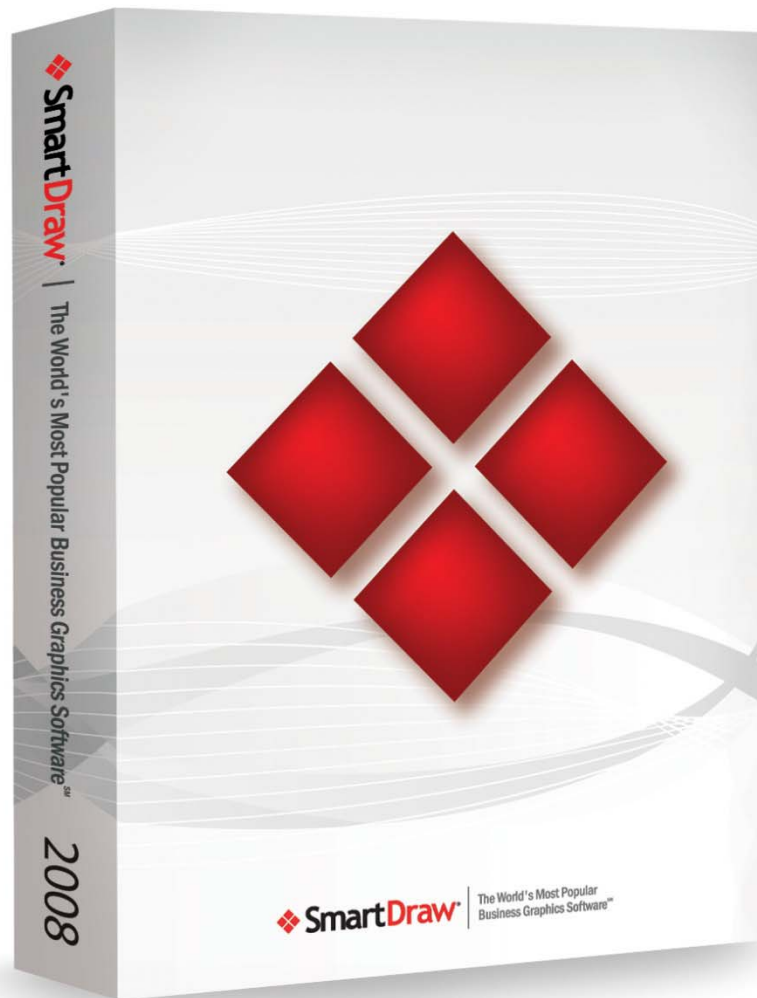
Your Trusted Channel Navigator



Guide to SmartDraw for IT Professionals



Guide to SmartDraw for IT Professionals



 **SmartDraw**® | The World's Most Popular Business Graphics Software™

Introduction..... 3

SmartDraw Features & Specifications 6

SmartDraw Licensing Options 8

SmartDraw and the Competition 10

SmartDraw.com Corporate Profile..... 13

Installation Guide..... 14

Installation Options..... 14

Installing SmartDraw on a Network Server 14

Installing on a client computer 19

Installing on Windows Vista® 33

SmartDraw Software License Agreement..... 34

Introduction

Welcome to the SmartDraw Guide for IT Professionals. This guide is designed to answer any questions you may have about SmartDraw and to help you decide if SmartDraw is the right choice for your organization.

This document includes the following information:

- SmartDraw Features and Requirements
- SmartDraw Licensing Plans
- SmartDraw compared to Visio and other graphics programs.
- SmartDraw.com Corporate Fact Sheet
- The SmartDraw Installation Guide

We summarize the highlights of this information below.

Business Graphics Can Improve Your Organization's Performance.

SmartDraw Makes it Possible.

As a leader in IT, you know that software decisions are *strategic decisions*. The right choice can make a real impact on the performance of your organization. Here's why providing your users with SmartDraw makes excellent strategic sense:

- **Business graphics software can boost the bottom line.**
More persuasive proposals and presentations mean increased sales and revenue. Plus, every department can lower costs and increase efficiency by managing processes, projects, and people more effectively.
- **SmartDraw is business graphics software that users will actually use.**
The easier it is, the more they'll use it and realize the benefits. SmartDraw automates the drawing process to such an extent that even the most novice user can become instantly productive.

SmartDraw Features and Requirements

SmartDraw makes it possible for ordinary people to create presentation-quality business graphics in minutes—no experience or training required.

SmartDraw achieves this by enabling you to select the exact template you want from over a hundred different template types - unlike other graphics software which offer a blank screen expecting you to draw. Then use simple commands to add your information and SmartDraw does the rest. In a matter of minutes you'll be using SmartDraw to create clear, compelling business graphics, like:

- Flowcharts
- Bar Graphs and Pie Charts
- Project Timelines
- Gantt Charts
- Floor Plans
- Venn Diagrams
- Scheduling Calendars
- Org Charts
- Marketing Charts
- Forms
- And more

With more than two million people installing and using it for the first time each year, SmartDraw is the world's most popular business graphics software.

SmartDraw requires Windows Vista®, XP or 2000.

Licensing Plans

There are three licensing plans for SmartDraw that progressively reduce costs as the number of users increase:

- Individual Licenses
- Multi-seat License
- Annual Site Licenses (also called the Freedom License)

For more detailed information about licensing plans see the [SmartDraw Licensing Options](#) section of this document.

Installing SmartDraw

SmartDraw can be installed on individual PCs or on a network server that is shared by multiple PCs. A Microsoft Installer (MSI) is available that supports Group Policy, SMS, and other remote installation software. The [SmartDraw Installation Guide](#) at the end of the document provides detailed information about all options and a step by step guide to each.

SmartDraw and the Competition

SmartDraw is often compared to Microsoft's Visio. There are at least five good reasons to choose SmartDraw over Visio:

- 1. SmartDraw costs less**
You can equip your entire organization for less than the maintenance cost on the equivalent number of seats of Visio.
- 2. Users *actually* use SmartDraw**
SmartDraw automates the drawing process—adding and removing lines, arranging shapes, and applying perfect graphic design for users, so they use it more. Stop paying for software that is rarely or never used.
- 3. SmartDraw needs little to no support**
Even the most novice users can become instantly productive with SmartDraw. That means they need less support. When they do, direct users to SmartDraw's free, 1-800 help desk in San Diego, CA.
- 4. Simplified installation and maintenance**
SmartDraw's network installation options allow you to install and configure in the way that's best for you.
- 5. SmartDraw does more than Visio**
Data-driven charts, integration with Google maps, image editing, web page capture, automatic drawing, one-click export to Microsoft Office and more.

In short, SmartDraw is appreciated by your users, easy on your staff, and light on your budget. It's the perfect Visio® alternative. If you already own Visio®, SmartDraw can view your vsd files. Complete details are explained in the [SmartDraw vs. The Competition section of this document](#).

SmartDraw the Company

SmartDraw.com is the leader in the rapidly growing business graphics software market that is made up of the millions of ordinary computer users who want to create extraordinary business graphics, but don't have the expertise to use software designed for graphics professionals.

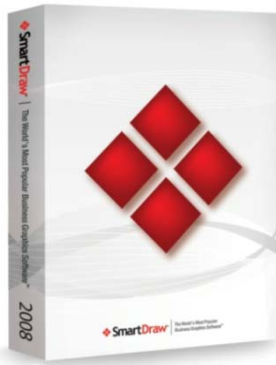
SmartDraw.com has been in business since 1994 and continues to grow, as recently recognized by Inc. Magazine and Deloitte. SmartDraw.com is privately held by founders and employees, and has been financially self-sustaining and profitable since inception.

SmartDraw Features & Specifications

Communicate. Persuade. Succeed. With Business Graphics.

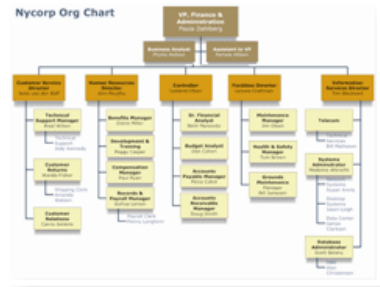
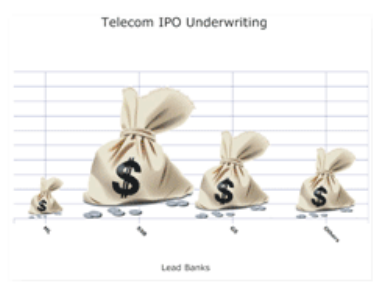
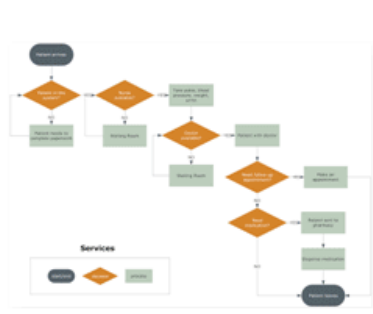
Create presentation-quality graphics in minutes, not hours.

SmartDraw gives you the power to create the graphics you need to succeed—fast. With SmartDraw, you start by selecting the exact template you want from over a hundred different types. Then use simple commands to add your information and SmartDraw does the rest. In a matter of minutes you'll be using SmartDraw to create clear, compelling business graphics, like:



SmartDraw gives you the power to create presentation-quality business graphics in minutes.

- Flowcharts
- Bar Graphs and Pie Charts
- Project Timelines
- Gantt Charts
- Floor Plans
- Venn Diagrams
- Scheduling Calendars
- Org Charts
- Marketing Charts
- Forms
- And more



SmartDraw highlights

- Hundreds of professionally designed, interactive SmartTemplates™ automate the drawing process and guarantee presentation-quality results
- Works seamlessly with Microsoft Word®, PowerPoint®, and other Windows programs. Copy graphics into Office documents or to PDF with a single click.
- Unlimited, live, free support from our in-house technical support team.

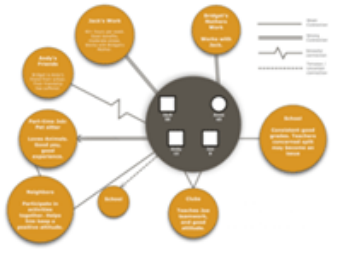
Smart Features for Fantastic Results, Fast

Automatic Flowcharting

SmartDraw makes it possible to build flowcharts by clicking simple commands, rather than manually arranging and connecting shapes on the page. Lines are drawn automatically, and formatting is automatic with shapes evenly spaced and perfectly aligned.

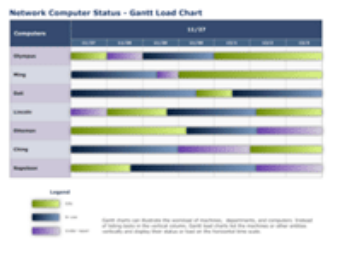
Automatic Business Graphics of all Kinds

SmartDraw includes hundreds of specialized SmartTemplates™ to simplify the creation of every type of diagram, including: organization charts, project charts, decision trees, cause-effect diagrams, bar and pie charts, genograms, and more.



Instant Graphic Design

A professionally-designed graphic theme, specifying colors, line and type style, is automatically applied to each graphic. Select and change the theme with a single click.



Express Charting

Create charts and graphs without having to make a spreadsheet first. Simply pick a chart and type your data directly into the bars. You can even drag the bars to represent the right values.

ImageCharts

Your information is not just data, it's a compelling story. And ImageCharts tell it better by using pictures and images to display your information, instead of standard bars, lines and circles. Create an ImageChart in seconds by dragging any image—even a photo—onto your chart, and watch your data come alive.



Live Maps

SmartDraw takes map graphics into uncharted territory with Live Maps. Live data is captured from the Internet allowing you to incorporate roads, regions, counties, zip codes, countries and even satellite images from across the globe into your illustrations—all as separate, editable elements. Perfect for real estate, surveying, sales territory mapping, and more.



Integrated Photo Capability

Built-in photo-software functionality makes it a snap to incorporate photos into your business graphics. Import directly from your digital camera or other source, crop and scale, adjust color and brightness, and place into org charts or any other illustration.



Microsoft Office Interoperability

SmartDraw works seamlessly with Microsoft Word®, PowerPoint®, and other Windows programs—copy your illustration into any Office document with a single click.



System Requirements

- Windows Vista®, XP, or 2000
- 256MB RAM
- 3GB free hard disk space

SmartDraw Licensing Options

SmartDraw offers three types of licenses

Individual License

Seats: 1

License type: Perpetual

Cost: \$197

Optional Maintenance¹:
\$49 per license

The individual license is perfect for a single user. It even allows you to use SmartDraw on one additional computer (like a laptop).

Multi-seat License

Seats: 5 or more

License type: Perpetual

Cost: From \$149.50

Optional Maintenance¹:
\$49 per seat

A multi-seat license has just one serial number that can be used to install the program on multiple computers or on a single network server to be shared by multiple computers.

Freedom License

Seats: Unlimited

License type: Annual site license

Cost: From \$2,995² per site, per year

Maintenance: Included

The Freedom License is an annual site license that allows you to install SmartDraw on an unlimited number of PCs, or one or more network servers that can be shared by everyone within your organization.

The cost of a Freedom License is one predictable annual fee with:

- No acquisition costs
- No upgrade costs
- No additional license costs
- Free Maintenance & Premium Support

The Freedom License is an ideal way to make SmartDraw widely available in an organization without committing to large, up-front acquisition costs.

²The cost of a Freedom License depends on your pool of potential SmartDraw users. For a pool of up to 100 users, the cost is \$2995 per year.

Need help deciding which license is right for you? We'd be happy to explain the different options and give you a customized quotation. Just call 858-225-3370 or toll-free 800-817-4238 or e-mail sales@smartdraw.com.

¹Optional Maintenance and Premium Support Plan

The Maintenance & Premium Support plan adds protection and peace of mind. As a subscriber you get:

- **All software patches and upgrades**—including major upgrades—for as long as your subscription is up to date
 - Never pay for upgrades
 - Easy renewal—as long as you are a subscriber, upgrades come automatically
- **Unlimited Premium support** by phone or online
 - Exclusive Premium Support 800 Number
 - Priority Premium Email Support
 - All Premium Support calls and emails are given 1st priority and are answered by our most senior support staff.

SmartDraw Maintenance & Premium Support is sold on a per license basis as an annual subscription (for SmartDraw 2008 and above only).

Which License is right for your organization?

The table below illustrates how the Freedom License is a better choice for multiple seat installations of 20 users or more.

Seats	Multi-Seat License			Freedom License			
	Acquisition	1YR*	Total Cost	Acquisition	1YR*	Total Cost	Better Choice
5	\$885	\$245	\$1,130	\$0	\$2,995	\$2,995	Multi-Seat
10	\$1,495	\$490	\$1,985	\$0	\$2,995	\$2,995	Multi-Seat
20	\$2,990	\$980	\$3,970	\$0	\$2,995	\$2,995	Freedom License
50	\$7,475	\$2,450	\$9,925	\$0	\$2,995	\$2,995	Freedom License
100	\$14,950	\$4,900	\$19,850	\$0	\$2,995	\$2,995	Freedom License

*1-Year Maintenance

Need help deciding which license is right for your organization? We'd be happy to explain the different options and give you a customized quotation. Just call 858-225-3370 or toll-free 800-817-4238 or e-mail sales@smartdraw.com.

SmartDraw and the Competition

Visio®

Business graphics have the power to improve your organization’s performance—by increasing sales through more persuasive presentations, for example, and by lowering costs and increasing efficiency through more clearly documented procedures. However, an organization will miss out on these advantages if the business graphics tool is too difficult to use. SmartDraw makes it easy for anyone in any department to create and use business graphics, especially when compared to Microsoft’s Visio®.

There are at least five good reasons to choose SmartDraw over Visio®:

1. **Users actually use SmartDraw**
SmartDraw automates the drawing process—adding and removing lines, arranging shapes, and applying perfect graphic design for users, so they use it more. Stop paying for software that is rarely or never used.
2. **SmartDraw costs less**
You can equip your entire organization for less than the maintenance cost on the equivalent number of seats of Visio®. (See the cost comparison chart below.)
3. **SmartDraw needs little to no support**
Even the most novice users can become instantly productive with SmartDraw. That means they need less support. When they do, direct users to SmartDraw’s free, 1-800 help desk in San Diego, CA.
4. **Simplified installation and maintenance**
SmartDraw’s network installation options allow you to install and configure in the way that’s best for you.
5. **SmartDraw does more than Visio®**
Data-driven charts, integration with Google maps, image editing, web page capture, automatic drawing, one-click export to Microsoft Office and more.

*"Best in the West!!
SmartDraw beats
Visio® hands down
for ease of use and
intuitive learning!"*
*Kerry Stewart -
Palmerston North,
New Zealand*

A side-by-side feature set comparison clearly demonstrates that SmartDraw is a more powerful tool than Visio®.

Feature	SmartDraw 2008	Visio® 2007*
Pre-designed templates	1900	152
Drag & Drop Drawing	x	x
Automated Command-Driven drawing	x	
Automatic Project Charts	x	x
Automatic Flowcharting	x	

Automatic Swim lanes	x	
Automatic Org Chart formatting	x	
Automatic Mind Maps	x	
Automatic Decision Trees	x	
Automatic Cause and Effect Diagrams	x	
Automatic Genograms	x	
Data-driven Charts and Graphs	x	
Live Maps (with live data from Google Maps)	x	
Integrated Photo capability	x	
New Office 2007 "ribbon" Interface	x	
One-Click transfer to Office 2007 & PDF	x	
Automatically grow the drawing area	x	
Programming Language		x
Automatic web site mapping		x

Even though SmartDraw does more than Visio®, the total cost of ownership—especially for multi-seat installations—is significantly less, as shown in the table below.

Seats	VISIO 2007*				SmartDraw				Savings
	Acquisition	Maintenance		Total	Acquisition	Maintenance		Total	
		Year 1	Year 2			Year 1	Year 2		
1	443	128	128	\$699	197	49	49	\$295	\$404
5	2,215	647	647	\$3,508	885	245	245	\$1,375	\$2,133
10	4,430	1,279	1,279	\$6,988	1,495	490	490	\$2,475	\$4,513
20	8,860	2,544	2,544	\$13,948	0	2,995	2,995	\$5,990	\$7,958
50	22,150	6,339	6,339	\$34,828	0	2,995	2,995	\$5,990	\$28,838
100	44,299	12,664	12,664	\$69,627	0	2,995	2,995	\$5,990	\$63,637

* Visio® 2007 Pro

Switching from Visio® to SmartDraw

If you already own Visio®, SmartDraw will convert your existing Visio® documents into SmartDraw documents, using SmartDraw's built-in File Conversion Wizard.

Viewing Converted Documents

The converted documents are viewable in SmartDraw and reproduce the original Visio® graphics very closely. In many organizations, most of the existing Visio® documents need only be viewed.

Editing Converted Documents

You can choose to switch the converted documents to editable form by ungrouping the Visio® image, but this will often result in some losses. The result is (like Visio®) a collection of graphic objects with none of the SmartDraw intelligence.

If you need to make small changes to an existing document, the easiest method is to not ungroup the Visio® image, and then draw on top of it.

If you want to continue to make regular changes to a document, we recommend recreating the documents using a SmartDraw template. This is a very quick process and you gain all the power of SmartDraw's automation for future modifications.

Using Both Programs

In many organizations there are a handful of frequent Visio® users and many other people that don't use Visio® (or any other graphics programs) at all. Some of these organizations choose to provide SmartDraw to bulk of their users and keep Visio® for the few specialists that want to keep using it.

Other Graphics Programs

Microsoft Office

Word and PowerPoint are the two applications our users most often waste time with first before they buy SmartDraw. They offer primitive drawing tools and very basic organization charts. Office is simply not an adequate solution for most business graphics needs.

Adobe Illustrator and Photoshop

These programs are general—purpose drawing programs designed for graphics professionals and don't compete at all with SmartDraw. SmartDraw is a business graphics program designed for non-graphics professionals.

"SmartDraw is an excellent and cost effective alternative to Visio®."

*Dustin Juliano,
President/CEO,
Ethereal Evolution, Inc.
- Fort Myers, FL*

"SmartDraw is a very intuitive product. Much easier than Visio®!"

*Linda Davis,
- Milltown IN*

SmartDraw.com Corporate Profile

Founded in 1994, SmartDraw.com is the creator of SmartDraw, the *World's Most Popular Business Graphics Software*.

SmartDraw gives ordinary computer users the power to create presentation-quality business of all kinds—such as flowcharts, bar graphs and pie charts, project timelines, org charts, floor plans, and more—in minutes without experience or special training. Each day more than 7,000 people install SmartDraw for the first time, and more than 10 million users have downloaded SmartDraw worldwide.



SmartDraw.com corporate headquarters in San Diego, California

SmartDraw.com is the leader in the rapidly growing *Business Graphics* market that is made up of the millions of everyday computer users who want to create attractive and effective business graphics, but don't have the expertise to use software designed for graphics professionals.

The key to SmartDraw's success is its unique SmartTemplate™ technology that automates the drawing process, guaranteeing presentation-quality results. SmartDraw has developed hundreds of SmartTemplates for every type of business graphic. Each SmartTemplate loads a diagram—specific SmartPanel™ command set and the associated SmartHelp™ step-by-step instructions. By using a SmartTemplate, a user becomes an instant expert graphic designer, able to easily make complex diagrams with SmartDraw's gallery of professionally designed templates.

A Different Kind of Software Company

SmartDraw.com is a different kind of software company: a pioneer in the direct-to-user Internet distribution model. The majority of its sales are delivered electronically, directly to the user. This close connection with its community of users allows SmartDraw.com to tailor its product to match user's needs. The design of SmartDraw 2008 is the result of extensive user testing and 13 years of feedback from the millions of SmartDraw users. In addition to having a strong online presence, SmartDraw is also available through software resellers in the U.S., such as SHI, Insight, ASAP, and others, including a network of international resellers.

The SmartDraw Product Line

For general business users, SmartDraw 2008 is the choice for creating business graphics of all kinds, including flowcharts, bar graphs, pie charts, Gantt charts, timelines, organizational charts, calendars, flyers, floor plans, technical diagrams, and more.

In addition, SmartDraw 2008 is available in two industry-specific solutions: SmartDraw Legal Edition 2008 and SmartDraw Healthcare Edition 2008. Each edition includes all the SmartDraw 2008 features and functions, plus industry specific SmartTemplates, examples, symbols and SmartHelp.

Installation Guide

Installation Options

There are two ways to install SmartDraw for use in an organization:

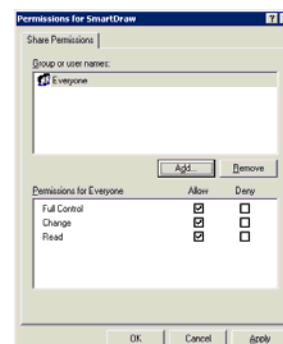
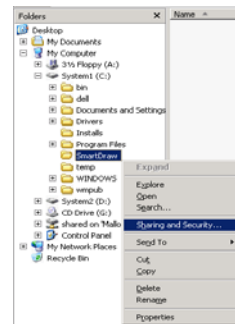
1. On a network server
2. On individual client computers

Installing SmartDraw on a Network Server

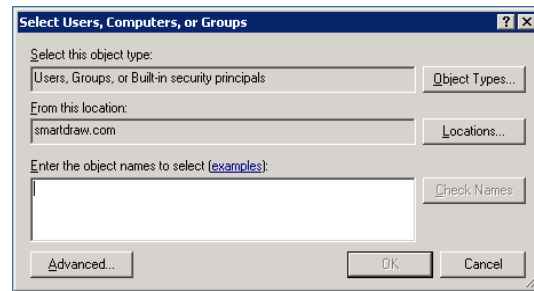
SmartDraw may be installed remotely on a server and shared by multiple users with a multi-seat license or a freedom license. The program is loaded from the server but actually runs on a user’s client machine. No registry entries or other changes are made to the server. This method of installation requires the least amount of maintenance from an Administrative standpoint as only one installation of SmartDraw needs to be maintained and updated.

Step # 1: Setting the server up properly.

1. To install on a server, you must set up an appropriate network share. On the target server, create a folder called “SmartDraw”.
2. Right-click on the SmartDraw folder and select “Share & Security”.
3. Choose to share the folder and give it an appropriate share name.
4. Click on the Permissions button to set the appropriate access to the folder.
5. In the Permissions Dialog, click on “Add” to selectively add permissions to the folder.



6. Under Normal Server configurations, you can give access to users, groups, or built-in security principles.



7. Once permissions are set, your share on the server should be ready.



A Note on Permissions

The administrator installing SmartDraw should have “Full Control” over the folder.

It is recommended that you give users “Change” and “Read” permissions to the folder so they can freely access the program and make changes to libraries if necessary.

In the event you wish to lock down the environment, you can set the permissions to “Read” only for the folder with the exception of one file, SDX.DLX (that is created after you install SmartDraw 2008).

This file keeps track of the number of seats used and must be set to “Change” and “Read” permission for all users.

You must set the permission of SDX.DLX after it has been installed.


Step # 2: Installing SmartDraw 2008

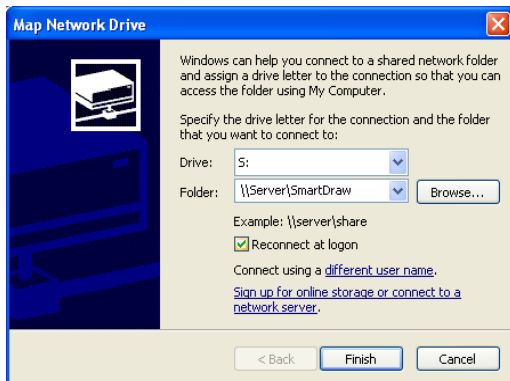
Once you've set up the share properly, run the SmartDraw "setup.msi" from the client machine or on the server.

If you install from the server, your installation directory should read:

C:\SmartDraw\SmartDraw 2008 (or the name of the shared folder you created)

If you wish to install to a client PC, you will need to map the SmartDraw share before proceeding to the next step.

1. To Map your share, open  [My Computer](#).
2. On the **Tools** menu, click **Map Network Drive**.
3. In **Drive**, type or select the [drive letter](#) to map to the [shared resource](#).
4. In **Folder**, type the [server](#) and share name of the resource, in the form of `\\server name\share name`. Or click **Browse** to locate the resource.
5. Click **Finish**.
6. In the **User name and password** dialog box, in **User name**, type your [user name](#) if you are prompted.
7. In **Password**, type your password.



After you've set up your mapped drive, you can then choose your newly mapped drive as the installation directory:

Your installation directory should read:

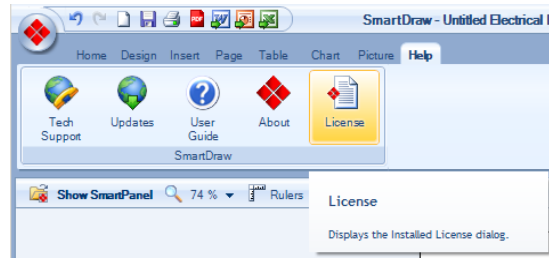
[Drive]:\SmartDraw\SmartDraw 2008

After you have your installation directory squared away, simply enter your serial number when prompted and let the installation finish (You should also have a live Internet connection to your client machine).

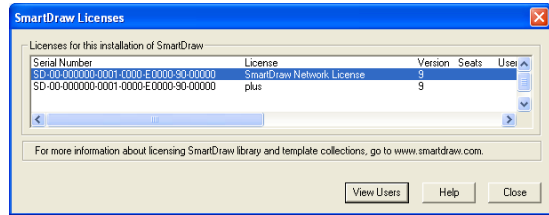
When the installation is complete, SmartDraw will create its license file *sdx.dlx* in the installation directory and then validate it by connecting to smartdraw.com.

Administering a Multi-Seat License

(This administrative tool is not available to freedom licenses). To access the Administration Dialog, start up SmartDraw, create a document, access the Help Ribbon, and select the "License" icon.



At the "SmartDraw Licenses Dialog, hold down the "CTRL" and "SHIFT" key and click on the "View Users" button. This will open the "Network Administration" dialog with Administrative rights.

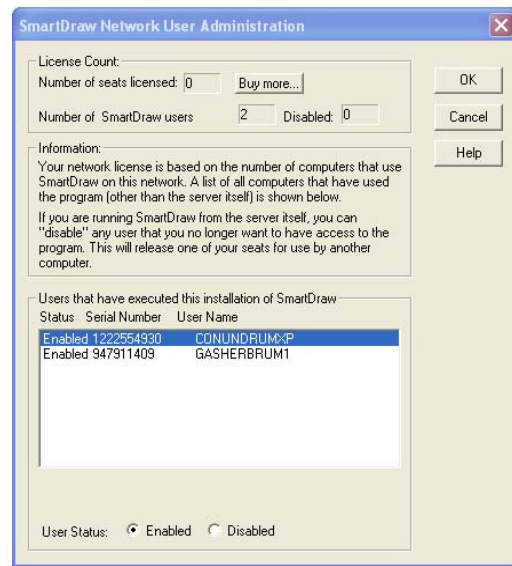


If no "View Users" button is present, this means that no one has connected to the network copy of SmartDraw yet. Exit out of SmartDraw and have one or two users log on and exit out and try accessing the dialog again.

Each new client machine that makes use of a network installation of SmartDraw with a multi-seat license is added to the list of seats used.

The "Computer Name" is logged as the "User Name" and the computer's default hard-drive's serial number is recorded as the "Serial Number."

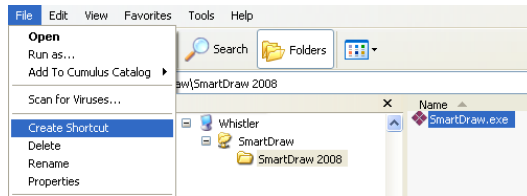
Once the number of seats purchased equals the number of seats used, no more clients may access the installation. You can disable users on the seat list to free up seats for a new user or old user. A disabled client cannot run SmartDraw from that client.



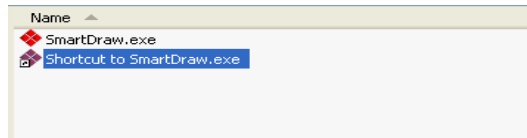
If you need more licenses, we'd be happy to explain the different options available to you. Just call 858-225-3370 or toll-free 800-817-4238, or e-mail sales@smartdraw.com.

Step # 3: Creating Desktop shortcuts for your users

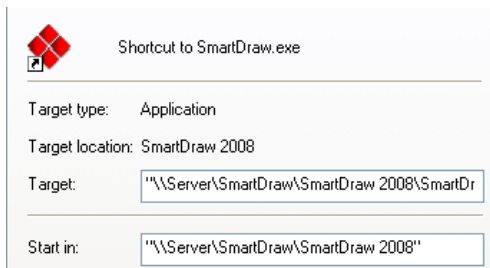
1. Now that you have SmartDraw installed on the network, you can create shortcuts to the SmartDraw.exe file so they can run the program.



2. Through Windows Explorer, browse to the SmartDraw installation directory on the server, and select "SmartDraw.exe", and go to the File Menu, and select "Create Shortcut."



3. Deploy the shortcut to your users and they can click on it to run SmartDraw at any time.



Installing on a client computer

The simplest way to install SmartDraw on an individual PC is to insert the program CD into the drive, wait for setup.exe to start, and then enter the serial number when prompted.

Alternatively, if your users have permission to install programs on their own PC, they can self-install from the setup.exe/setup.msi copied to a network server\share. The steps required are:

1. Copy setup.exe\setup.msi from the CD to a location on a shared server. (See **Step # 1: Setting the server up properly** for basic steps on how to create your shared directory.
2. Send the network (UNC) path to the setup.exe\setup.msi to your users and have them run the file.
3. When they execute the file, they will be prompted for the Serial Number to proceed with the install.

This is not however the most efficient way to install a large number of licenses onto client machines. For mass deployment of SmartDraw, you can use the Orca MSI table editor to change or bundle certain information directly into the MSI install. After modifications, you can use a distribution package to quickly install without any user action such as:

- Group Policy and the Active Directory
- Systems Management Server (SMS)
- Other remote installation software

If you are deploying SmartDraw to a Windows **Vista**® Operating System with User Access Control (UAC) turned on, please see the section on Installing on Windows Vista®.

Orca, a MSI Table Editor

Orca is a Microsoft utility for modifying and validating Windows Installer packages. It is a database tool intended for setup authors and administrators that works with the Windows Installer Service. This utility is a part of the Windows Installer SDK download, along with other MSI—related tools.

You can use Orca to open and modify MSI packages and ISM project files.

To download and install Orca, follow these steps:

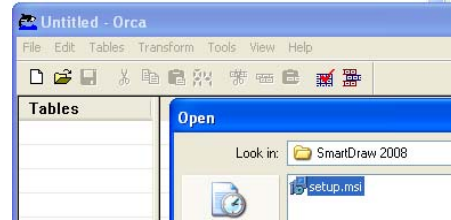
1. Visit the SDK Platform Site page on <http://www.microsoft.com> to download the Windows Installer SDK.
2. Click on that link to go to the next page to download Windows Installer SDK, which includes Orca.
3. After downloading and installing Windows Installer SDK, go to \Program Files\Microsoft SDK\Bin folder on the machine to look for Orca.msi.
4. Run Orca.msi by double clicking on it, which is the setup to install Orca on your machine.
5. After installing Orca on your machine, you will be able to right click on any MSI package and open it in Orca.

Note: Because Orca allows for direct modification of the MSI package, ISM or ISE files, which may have an impact on the project, it is recommended that users make a backup copy of the file they are about to modify.

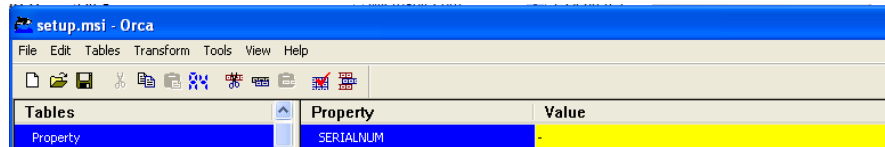
Using Orca to bundle your Serial Number into setup.msi

1. First copy setup.msi to the network share where you plan on hosting the install.

2. Launch Orca (which should be available under the Start → Programs Menu after it is installed) and under the File Menu, choose Open, and browse to your copy of setup.msi and select the “Open” button.



3. You will be presented with a list of values under the Tables menu.
 - a. Scroll down to “Property” and select it, which will populate the “Property & Value” window at the right of the menu and select “SERIALNUM”.



- b. Click on the Value field for “SERIALNUM” and enter your serial number in.



- c. Now go to the File Menu and click “Save”. You’ve now modified your copy of setup.msi to host your serial number. It will no longer prompt you for a serial number to install with.
4. Now deploy the setup.msi via Group Policy or SMS.
 - a. It is a good idea to run the MSI manually on a test machine to confirm the serial number was entered properly.

Other things you can modify with Orca

SmartDraw has built-in Internet calls to:

1. Prompt the user with a Survey after their first use of the program.
2. Warn users when a Freedom License is about to expire
3. Check for an updated version of the program (Messaging App)

Survey

SmartDraw is constantly looking for feedback on how to improve our products and appreciate any feedback we receive. To disable the survey using Orca, edit the “OwnerSurvey” property and set its “Value” to “1.”

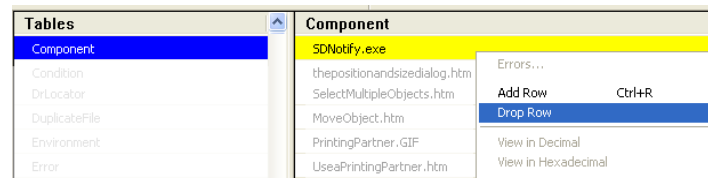
Freedom Licenses

When a freedom license is about to expire, a reminder that the freedom license needs to be renewed appears during the last 30 days, every time the program is run. To disable this reminder, using Orca edit the “NoFreedomWarning” property and set its “Value” to “1”.

By turning off this reminder, SmartDraw will simply stop running after it expires, if it is not renewed before then. Administrators should be aware of when the license is going to expire, so it can be renewed in a timely manner before users experience any difficulties accessing the SmartDraw program.

Messaging Application

The SmartDraw Messaging Application (SDNotify.exe) is a utility that checks our servers for any messages relevant to the users, such as a new update patch, or when a new version is released. To disable this application using Orca, go to the “Components” Table and search for a Component called “SDNotify.exe.” Right click this file, and in the Right-click Menu, choose “Drop Row.”



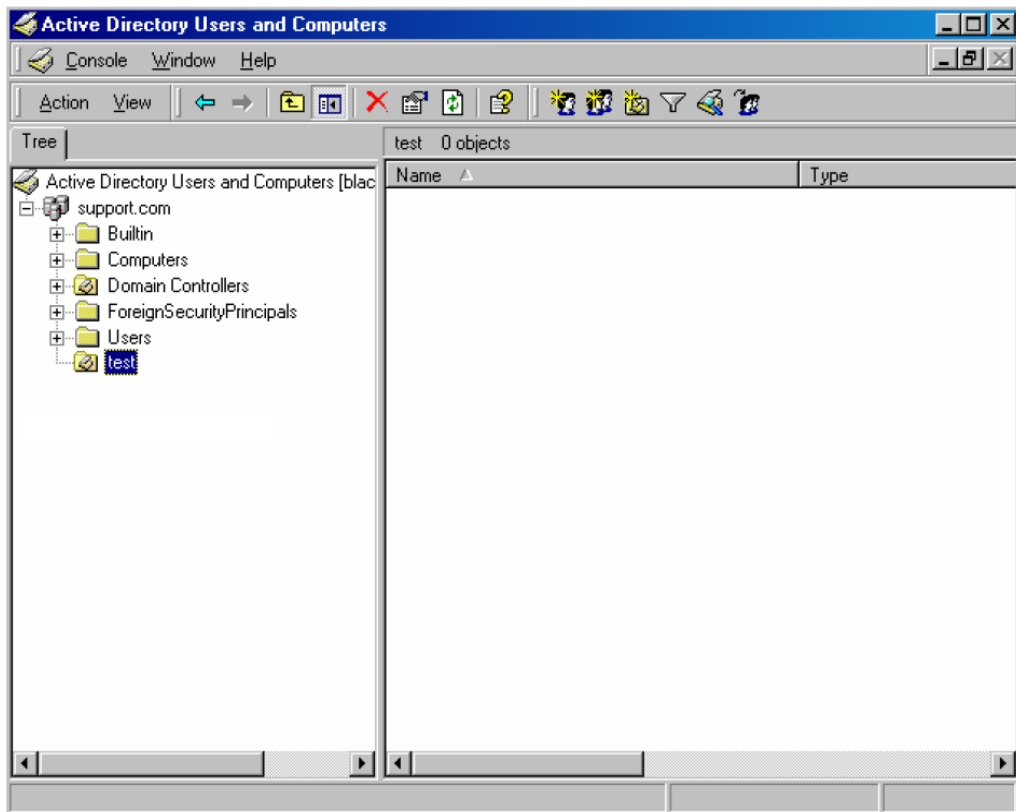
You can use Orca to change other properties of the install such as the installation directory. We suggest you take an in-depth look at the Orca documentation before doing so.

Group Policy and the Active Directory

Group policy is a feature of the Microsoft Windows NT family of operating systems that provides centralized management and configuration of computers and remote users in an Active Directory environment.

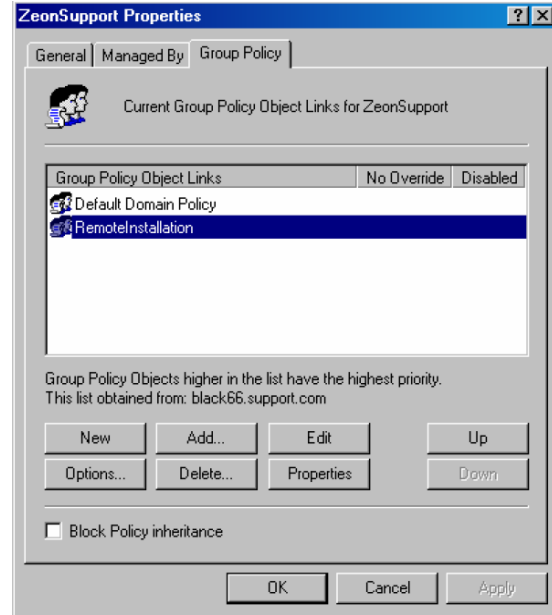
To deploy via group policy:

1. On the server, choose “Start>Programs>Administrative Tools”, and click “Active Directory Users and Computers”. This step starts Active Directory Users and Computers Microsoft Management Console (MMC).



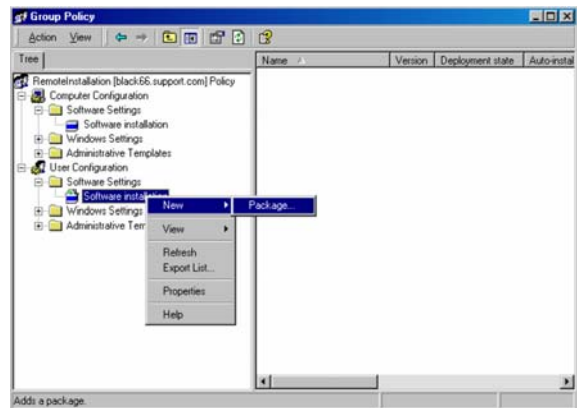
Note: If Administrative Tools was not found, please right-click the taskbar, click “Properties,” and select “Display Administrative Tools” on the “Advanced” tab.

2. Right-click the Organizational Unit on which you want to install the package and select “Properties.”



3. In the Group Policy tab, select a Group Policy Object or create a new one, and click Edit. The Group Policy MMC will start.

4. In the Group Policy MMC, expand the “Computer Configuration>Software Settings” or “User Configuration>Software Settings.” Right-click Software installation and select New>Package....



5. In the Open dialog, browse to the installer (setup.msi you modified) and click open. Note: The MSI installer requires the client computers to have the MSI 2.0 engine installed.
6. In the Deploy Software dialog, select Assigned and click OK. You’ve now setup SmartDraw to deploy to the computers or users found within the group policy, and it will be installed the next time the policy is updated on their computer.

Systems Management Server (SMS)

Microsoft Systems Management Server (SMS) is a systems management software product by Microsoft for managing large groups of Windows-based computer systems. SMS provides remote control, patch management, software distribution, and hardware and software inventory.

To distribute via SMS:

1. Copy the modified setup.msi either to a network share or a local share on the SMS site server. Name the share SmartDraw2008 and set the share permissions to Everyone - Full Control. Set NTFS security to the default of Read & Execute, List Folder Contents and Read for the group you wish to grant permission to the installation folder.
2. Create a collection of computers which contains all the computers onto which SmartDraw2008 will be installed.
3. From the SMS Administrator Console, right click Packages and select All Tasks> Distribute Software - this will initiate the Distribute Software Wizard, click Next.



4. On the Package page, select "Create a new package and program", click Next.



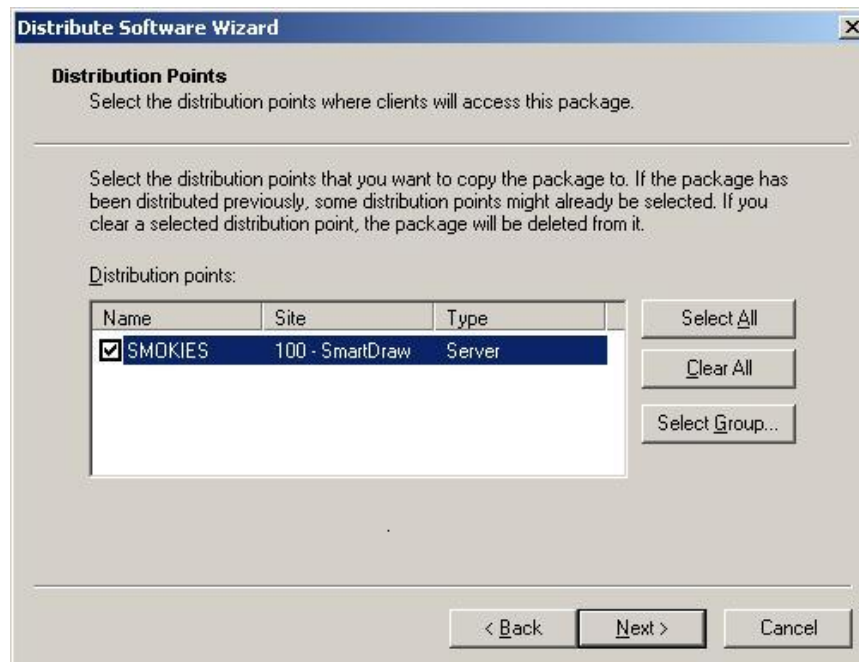
5. On the Package Identification page, enter SmartDraw2008 in the name field, click Next.



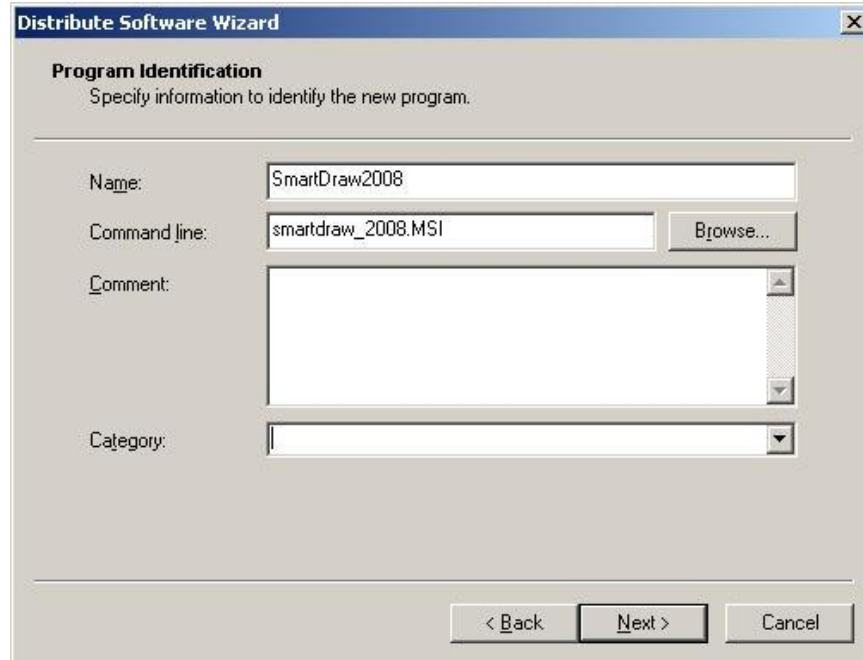
- On the Source Directory page, select “Network path (UNC name) if you placed the installation files on a network share; otherwise, select “Local drive on site server,” click Browse, navigate to the appropriate share, and click Next.



- On the Distribution Points page, check the distribution point(s), click Next.



- On the Program Identification page, enter SmartDraw2008 in the Name field, and click on Browse to navigate to the Setup.MSI file in the appropriate installation share, and click Next.



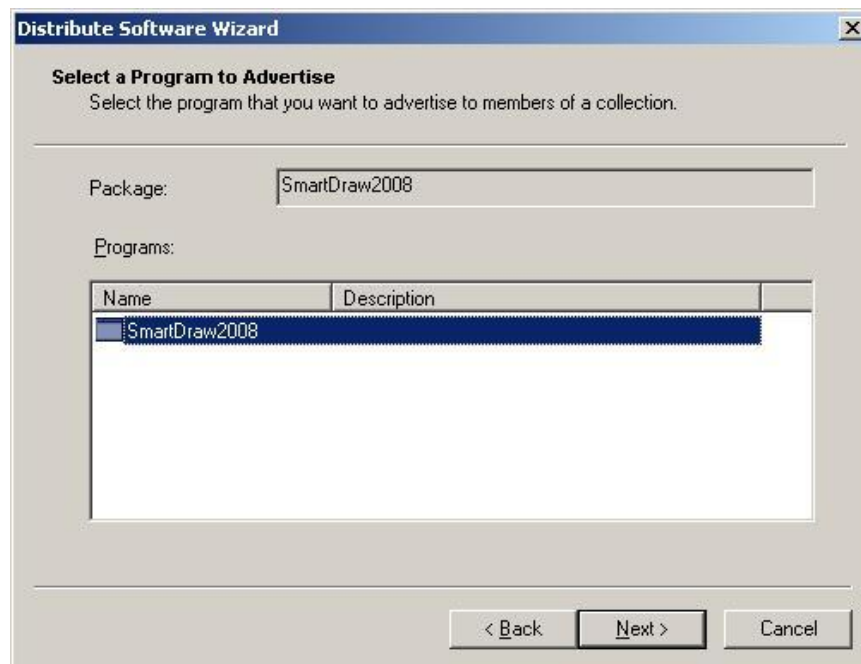
- On the Program Properties page, select the appropriate "Program can run" option, check the "Run with administrative rights" option, and click Next.



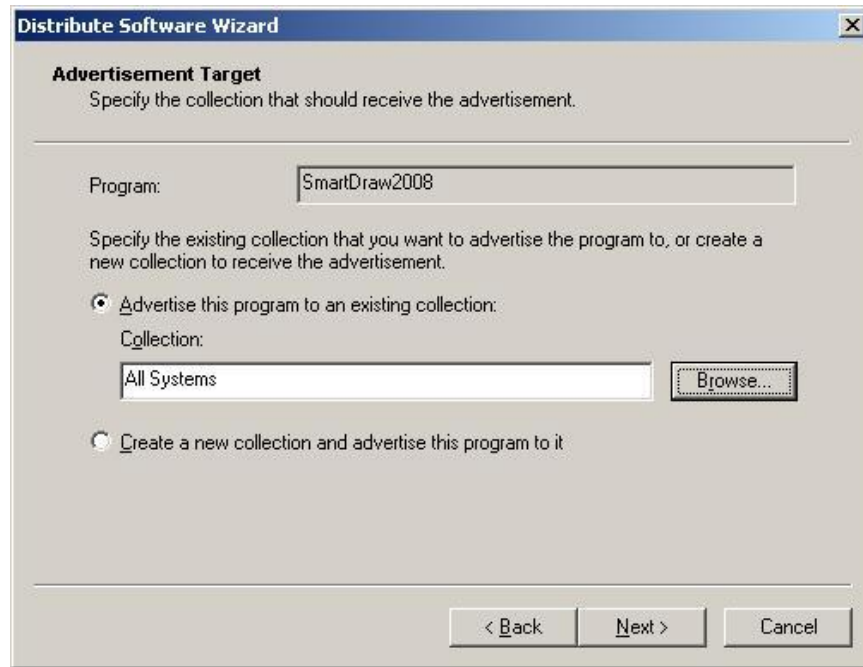
11. On the Advertise a Program page, make sure SmartDraw2008 is displayed in the Package field and select Yes to “Do you want to advertise a program from this package” option, click Next.



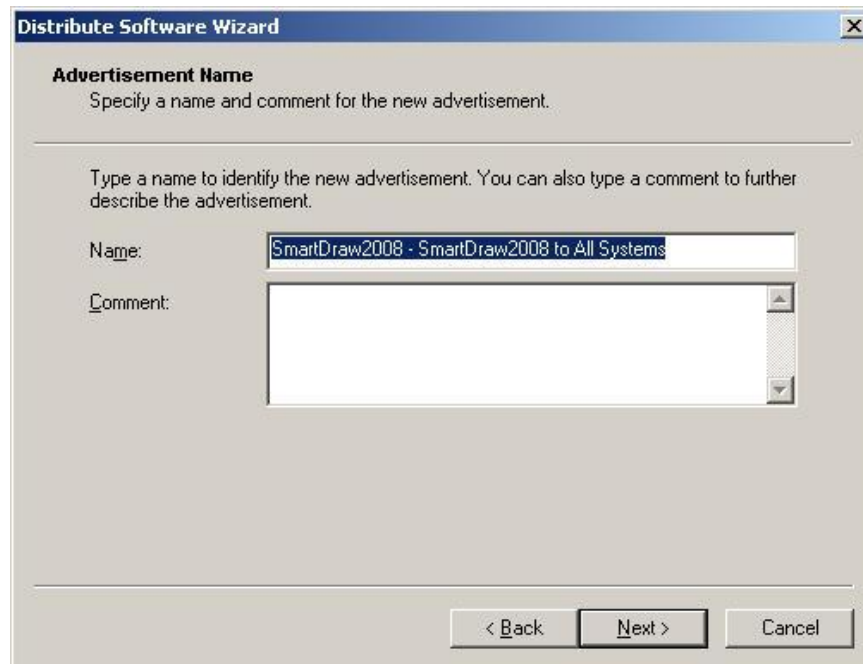
12. On the Select a Program to Advertise, make sure SmartDraw2008 is selected and click Next.



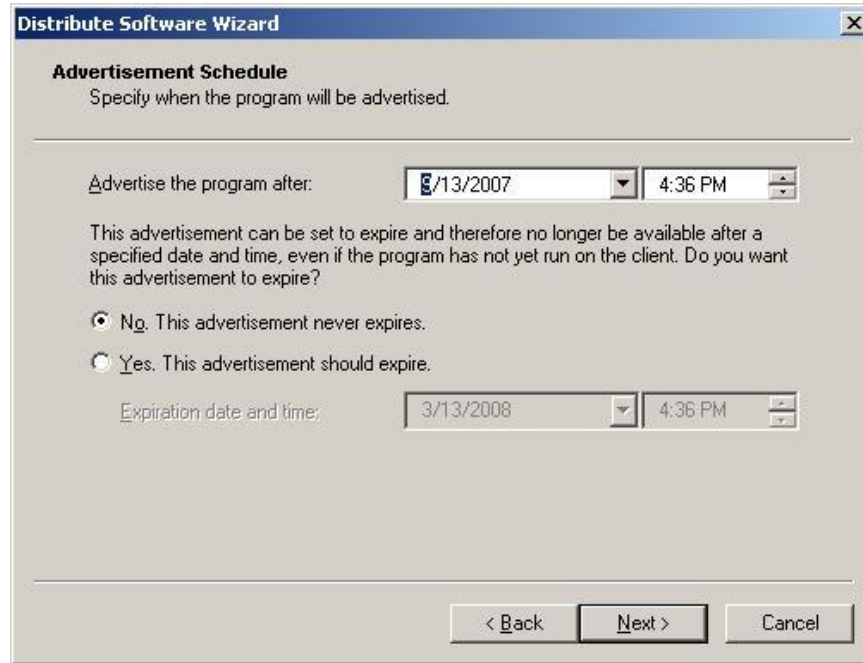
- On the Advertisement Target page, click “Advertise this program to an existing collection” option and click Browse. Navigate to the collection you created to install SmartDraw2008 and click Next.



- On the Advertisement Name page, ensure the SmartDraw2008 – SmartDraw2008 to “name of collection” shows up and click Next.



- On the Advertisement Schedule page, select the appropriate option for your environment and click Next.



- On the Assign Program page, select “Yes, Assign the program” and click Next.



17. Click Finish on the Distribute Software Wizard and SmartDraw is now set to distribute to your computer environment.



Installing on Windows Vista®

With the release of Windows Vista®, a new feature called User Access Control was introduced. The main goal of User Account Control is to reduce the exposure and attack surface of the operating system by requiring that all users run in standard user mode and software is installed on a per user basis by default. For programs such as SmartDraw, which takes an average of 2 gigabytes of disk space, per user installation by machine is not recommended.

As a defense-in-depth measure, User Account Control also provides additional protection for administrators through its Administrator Approval Mode. With Administrator Approval Mode, Windows Vista® will run most applications with standard user permissions even if the user is an administrator. If a user wishes to run a program that requires administrator permissions, they must give consent through a User Account Control prompt. This helps limit malware's ability to make system-wide changes without the administrator's knowledge. However, Administrator Approval Mode does not provide the same level of security or control as a true standard user account.

The UAC control creates some difficulties when installing SmartDraw, as the Windows Installer 4.0 engine, running in the Local System account on Windows Vista®, has lesser permissions than it had on previous Windows versions and inheritance of permissions does not work properly with MSI installations.

Installing a individual client PC

To work around this, you must install with setup.exe, instead of setup.msi. Windows Vista® will immediately detect that setup.exe is an install program that will require elevated rights and therefore display the UAC prompt in which you can give it permission to continue running. As a result, the entire install executes with elevated privileges. In contrast, when running the setup.msi directly, the UAC prompts occur later and do not elevate rights in the correct sequence of events; as a result, and most installations run with restricted permissions.

Deploying via Group Policy & SMS

Deploying via Group Policy, SMS or other deployment systems should largely remain unaffected, as the Systems Administrator should not be affected by UAC when deploying to a Vista® client. Please contact support@smartdraw.com with your network environment details if you encounter problems.

As documentation on how to work with these new restrictions is released, SmartDraw will continue to monitor and improve this aspect of installation.

SmartDraw Software License Agreement

IMPORTANT: CAREFULLY READ THIS LICENSE AGREEMENT ("LICENSE") BEFORE USING THIS PRODUCT. THIS LICENSE IS AN INTEGRAL PART OF THE SALES AGREEMENT UNDER WHICH YOU HAVE PURCHASED A LICENSE TO USE SMARTDRAW.COM'S SOFTWARE PRODUCT (the "Sales Agreement").

* YOUR INSTALLATION, COPYING, OR USE OF THIS PRODUCT INDICATES YOUR ACCEPTANCE OF THIS LICENSE, AND THAT YOU AGREE TO BE BOUND BY AND COMPLY WITH ALL OF ITS TERMS.

* IF YOU HAVE PURCHASED THE PRODUCT ON BEHALF OF ANY ORGANIZATION, COMPANY OR OTHER ENTITY, YOU REPRESENT AND WARRANT THAT YOU HAVE FULL AUTHORITY TO ENTER INTO THIS LICENSE AND THE SALE AGREEMENT ON BEHALF OF SUCH ENTITY. ALL REFERENCES HEREIN TO "YOU" SHALL APPLY TO SUCH ENTITY.

* IF YOU DO NOT AGREE TO ALL OF THE TERMS AND CONDITIONS OF THIS LICENSE, THEN: (A) DO NOT COPY, INSTALL, OR USE THIS PRODUCT, AND (B) RETURN THE COMPLETE PRODUCT TO SMARTDRAW.COM IMMEDIATELY FOR A REFUND OF THE LICENSE FEES THAT YOU HAVE PAID.

A. DEFINITIONS:

SmartDraw.com is also referred to in this License as "we" or "us."

The "Product" consists of: (1) all materials with which this License is packaged or otherwise supplied by SmartDraw.com, which may include, but are not limited to, computer program(s), software, and code; the Images (as defined below); templates; symbols; text; accompanying printed materials; and "online" or electronic documentation, and (2) any Maintenance Releases and Upgrades (each as defined below) and any other supplemental software code and supporting materials which may be provided to you as part of support services provided or authorized by SmartDraw.com for the Product.

An "Upgrade" is a new version of the Product, and is identified by the numeral to the left of the decimal point following the name of the Product. A "Maintenance Release" is a software update to an existing version of the Product that is identified by the numeral to the right of the decimal point following the name of the Product. For example, in "Product 2.1", "1" is the Maintenance Release number and "2" is the Upgrade number. SmartDraw.com has the right, its sole discretion, to determine whether a particular change or addition to the Product is an Upgrade or a Maintenance Release.

B. SCOPE OF LICENSE. SmartDraw.com hereby grants you a non-exclusive, non-transferable license (without the right to sublicense) to use the Product in accordance with all of the terms and conditions of this License and the Sales Agreement. SmartDraw.com offers several different types of licenses for the Product:

1. **Single User License.** If you purchased a single user license, you may install and use one copy of the Product on a single computer (the "Primary Computer"). Subject to the terms and conditions of this License, you may make one (1) other copy of the Product and install it on another computer, provided the second computer is used exclusively by you. The two installations may not be used at the same time, and the second installation may not still be used after the time you no longer own the Primary Computer on which the Product is installed. Your right to use the Product is perpetual (provided that this License is not

terminated as specified elsewhere herein). You have the right to receive, free of charge, all Maintenance Releases for the version of the Product that you originally purchased. You do not have the right to receive free Upgrades, but you may be entitled to a discount on our standard fee for Upgrades, if so provided in your Sales Agreement.

2. **Workgroup Multi-Seat License.** If you purchased a workgroup multi-seat license, you may install the Product on more than one computer, or install the Product on a network server so that multiple computers can access it, in either case up to the limit set forth in the Sales Agreement. The Product may be installed on a network server, provided that the number of computers that access the Product via that server or otherwise does not exceed the number of computers specified in your Sales Agreement. For example, if your Sales Agreement specifies a workgroup multi-seat license for 100 computers, the Product may be installed: (a) on a network server where it will be accessible by no more than 100 different computers connected to the network served by that server, or (b) on up to 100 individual PC's, or (c) on some combination of both (a) and (b), provided that the total number of PC's that access the Product does not exceed 100. Your right to use the Product is perpetual (provided that this License is not terminated as specified elsewhere herein). You have the right to receive, free of charge, all Maintenance Releases for the version of the Product that you originally purchased. You do not have the right to receive free Upgrades, but you may be entitled to a discount on our standard fee for Upgrades, if so provided in your Sales Agreement.

3. **Workgroup Concurrent-User License.** If you purchased a workgroup concurrent-user license, you may install the Product on a network server, where the number of PC's that access the Product simultaneously does not exceed the number of users specified in your Sales Agreement. Your right to use the Product is perpetual (provided that this License is not terminated as specified elsewhere herein). You have the right to receive, free of charge, all Maintenance Releases for the version of the Product that you originally purchased. You do not have the right to receive free Upgrades, but you may be entitled to a discount on our standard fee for Upgrades, if so provided in your Sales Agreement.

4. **Freedom Site License.** If you purchased a "Freedom" site license, you may install any number of copies of the Product, but only on computers owned by your company/organization, for use strictly by your employees and agents. While you may install the Product on any number of computers without violating the license, you acknowledge that additional fees will be assessed, pursuant to the Sales Agreement, if you install the Product on more computers than the quantity listed in the Sales Agreement. Such fees shall be determined at the end of each 12-month period, and shall be assessed for the subsequent 12-month period. Your employees and agents may install a copy of the Product on their personally owned home computers, provided that they use the Product for your internal business purposes only, and not for their own personal use. You are responsible for the compliance of your employees and agents with the terms of this License. Your right to install and use the Product is valid only during the limited term specified in your Sales Agreement. The term will automatically renew for consecutive 12-month periods unless you provide written notice to cancel the license at least 30 days prior to the expiration of the term. You acknowledge that the Product is designed to cease to function on the expiration date if the license term is cancelled. You have the right to receive, free of charge, all Maintenance Releases and Upgrades that we make generally available during your license term.

5. **Student License.** If you purchased a Student License, you must be a full-time student, at a post-secondary school level. You are authorized to use this license only in your studies or for your personal use, and not for commercial or business use.

6. Limited Edition. If you purchased a Limited Edition, you are authorized only to use the SmartTemplates and examples accessed from one button on the Template Browser. For example, if you purchased a Limited Edition to use for Calendars you may only use the templates shown in the Template Browser when the Calendar button is selected.

7. Backup copy. Regardless of the type of license that you have purchased, you may make one (1) copy of the Product for archive or backup purposes.

C. YOU MAY NOT:

1. install, use, distribute or copy the Product except as expressly permitted in this License.
2. translate, reverse engineer, decompile, or disassemble the Product, except to the extent, if any, that such activities are clearly and expressly permitted by applicable law despite such restrictions.
3. sell, transfer, rent, lease or assign the Product, or allow any third party to benefit from or access the Product on a "service, bureau, hosted application, or similar basis."
4. modify the Product, merge the Product as part of any other product or collection of products, or create derivative works derived from the Product or any component thereof, without the prior written consent of SmartDraw.com.
5. use the Product, or any of its components, to create any product that competes with the Product or any of its components.
6. transfer the Product or your rights under this License to someone else.
7. permit others to perform any of the activities restricted by this Paragraph C.

In addition, in no event do we authorize you or anyone else to use the Product in applications or systems where the Product's failure to perform can reasonably be expected to result in significant physical injury, property damage, or loss of life, including but not limited to use in hazardous environments requiring fail-safe performance, such as in the operation of nuclear facilities, aircraft navigation or communication systems, air traffic control, direct life support machines, or weapons systems. The Product is not fault-tolerant and is not designed, manufactured or intended for any such use. Any such use is entirely at your own risk, and you agree to defend, indemnify and hold SmartDraw.com, and its principals, shareholders, officers, employees, affiliates, contractors, affiliates, and licensors, harmless from any and all claims or losses relating to such unauthorized use.

D. TERM:

If you purchased a "Freedom" site license, your license to use the Product is for a limited time period, as specified on your Sales Agreement. In all events, your rights regarding the Product under this License shall remain in effect only as long as you are in full compliance with the terms and conditions of this License and the Sales Agreement, and shall terminate automatically if you fail to comply with any such terms or conditions. You agree, upon termination, to destroy all copies of the Product received, made or

used by you in connection with this License. Paragraphs D, E, F, G and H and your indemnity obligations hereunder shall survive the expiration or termination for any reason of this Agreement.

E. OWNERSHIP

All patents, copyrights, trademarks, trade secrets and other intellectual property and other proprietary rights in the Product are and shall remain in SmartDraw.com or its licensors. The source code of the Product and all information regarding the design, structure or internal operation of the Product are valuable trade secrets of SmartDraw.com or its licensors ("Confidential Information"). To the extent, if any, to which you learn any Confidential Information, you shall not sell, transfer, publish, disclose, display, or otherwise permit access by any third party to, the Confidential Information. The restrictions set forth in this Paragraph E do not apply to information that was publicly known prior to the time you received it, or which becomes known to you through no violation of any obligation of confidentiality on the part of you or any third party. SmartDraw makes use of GNU GhostScript, an open-source interpreter for the PostScript language and the PDF file format. It is distributed under the GNU General Public License. You may obtain the source code for GNU GhostScript from <http://www.gnu.org/software/ghostscript/ghostscript.html>.

You shall ensure that any copies of the Product that you make or have made pursuant to this License bear all copyright and other proprietary notices contained in or affixed to the copy or copies of the Product as created and packaged by us. All rights of any kind in the Product that are not expressly granted in this License are entirely and exclusively reserved to SmartDraw.com or its licensors.

F. SERIAL NUMBER

This License has a unique serial number, which is Confidential Information. Publishing this serial number or disclosing it to any third party will be deemed a material breach of this License.

G. LIMITED WARRANTY; EXCLUSIONS OF LIABILITY:

1. THE PROVISIONS OF THIS PARAGRAPH G APPLY TO THE MAXIMUM EXTENT PERMITTED BY APPLICABLE LAW. YOU MAY HAVE OTHER RIGHTS, WHICH VARY FROM STATE TO STATE AND COUNTRY TO COUNTRY.

2. FOR A PERIOD OF 30 DAYS FOLLOWING YOUR PURCHASE OF THE PRODUCT (THE "WARRANTY PERIOD"), SMARTDRAW.COM WARRANTS THAT THE PRODUCT SHALL COMPLY IN ALL MATERIAL RESPECTS WITH ITS WRITTEN SPECIFICATIONS AND THAT ANY MEDIA UPON WHICH THE PRODUCT IS PROVIDED SHALL BE FREE OF MATERIAL DEFECTS. SMARTDRAW.COM'S SOLE LIABILITY, AND YOUR SOLE REMEDY, FOR ANY BREACH OF THE FOREGOING WARRANTY SHALL BE THE REPAIR OR REPLACEMENT OF THE PRODUCT OR MEDIA, AS APPLICABLE, OR THE REFUND OF ANY AMOUNTS PAID BY YOU FOR THE PURCHASE OF THE PRODUCT LICENSE. ALL WARRANTY CLAIMS MUST BE MADE DURING THE WARRANTY PERIOD.

3. EXCEPT AS EXPRESSLY PROVIDED IN PARAGRAPH G (2), THE PRODUCT IS PROVIDED TO YOU "AS IS" WITHOUT WARRANTY OF ANY KIND. SMARTDRAW.COM DOES NOT WARRANT THAT THE PRODUCT WILL MEET YOUR REQUIREMENTS, OR THAT THE OPERATION OF THE PRODUCT WILL BE UNINTERRUPTED OR

ERROR FREE. THE ENTIRE RISK AS TO THE RESULTS AND PERFORMANCE OF THE PRODUCT IS ASSUMED BY YOU. SMARTDRAW.COM DOES NOT MAKE, AND HEREBY DISCLAIMS ANY IMPLIED WARRANTIES OF NONINFRINGEMENT, MERCHANTABILITY AND FITNESS FOR A PARTICULAR PURPOSE. NO ORAL OR WRITTEN INFORMATION OR ADVICE GIVEN BY SMARTDRAW.COM, ITS DEALERS, DISTRIBUTORS, AGENTS OR EMPLOYEES SHALL CREATE A WARRANTY OR IN ANY WAY INCREASE THE SCOPE OF THE WARRANTY SET FORTH IN PARAGRAPH G(2), AND YOU MAY NOT RELY ON ANY SUCH INFORMATION OR ADVICE.

NEITHER SMARTDRAW.COM, ITS PRINCIPALS, SHAREHOLDERS, OFFICERS, EMPLOYEES, CONTRACTORS, AFFILIATES, LICENSORS, NOR ANYONE ELSE WHO HAS BEEN INVOLVED IN THE CREATION, PRODUCTION OR DELIVERY OF THE PRODUCT, SHALL BE LIABLE FOR ANY LOSS BUSINESS INTERRUPTION, OR LOSS OF BUSINESS, DATA OR USE OF COMPUTER SYSTEMS, REGARDLESS OF HOW THE FOREGOING DAMAGES ARE CHARACTERIZED, OR FOR ANY INDIRECT, CONSEQUENTIAL, INCIDENTAL OR PUNITIVE DAMAGES ARISING OUT OF THE USE OR INABILITY TO USE THE PRODUCT, EVEN IF SMARTDRAW.COM HAS BEEN ADVISED OF THE POSSIBILITY OF SUCH DAMAGES. THE LIMITATIONS SET FORTH ABOVE SHALL BE DEEMED TO APPLY TO THE MAXIMUM EXTENT PERMITTED BY APPLICABLE LAW AND NOTWITHSTANDING THE FAILURE OF THE ESSENTIAL PURPOSE OF ANY LIMITED REMEDIES. SMARTDRAW.COM'S AGGREGATE LIABILITY HEREUNDER SHALL BE LIMITED TO THE AMOUNT ACTUALLY PAID BY YOU FOR THE PRODUCT UNDER A FREEDOM SITE LICENSE IN THE ONE YEAR PERIOD PRIOR TO SUCH LIABILITY ARISING FOR THE PRODUCT, OR, IF YOU HAVE A SINGLE-USER, WORKGROUP MULTI-SEAT OR WORKGROUP CONCURRENT USER LICENSE, THE INITIAL FEE THAT YOU ACTUALLY PAID FOR THE PRODUCT. YOU ACKNOWLEDGE AND AGREE THAT YOU HAVE FULLY CONSIDERED THE FOREGOING ALLOCATION OF RISK AND FIND IT REASONABLE, AND THAT THE FOREGOING LIMITATIONS AND EXCLUSIONS ARE AN ESSENTIAL BASIS OF THE BARGAIN BETWEEN YOU AND SMARTDRAW.COM.

H. GENERAL:

This License, together with the Sales Agreement, forms the entire agreement between you and us regarding the subject matter set forth herein, superseding any other agreement or discussions, oral or written, and may not be changed except by a signed agreement. This License shall be governed by and construed in accordance with the laws of the State of California, excluding that body of law applicable to choice of law and excluding the United Nations Convention on Contracts for the International Sale of Goods and any legislation implementing such Convention. If any provision of this License is declared by a Court of competent jurisdiction to be invalid, illegal, or unenforceable, such provision shall be severed from the License and the other provisions shall remain in full force and effect. The prevailing party in any action to enforce or interpret this License agreement shall be entitled to recover its costs and expenses, including attorneys' fees.

You agree to the exclusive jurisdiction of, and venue in, the state and federal courts located in San Diego, California, USA for any dispute or matter relating to, arising from or connected with this License agreement. Notwithstanding the foregoing, SmartDraw.com shall have the right to seek injunctive relief and the enforcement of judgments in any court of competent jurisdiction. Any waiver by us of any violation of this License by you shall not constitute, nor contribute to, a waiver by us of any other or future violation of the same provision, or any other provision, of this License. The parties acknowledge and agree that no third party (including but not limited to your customers, clients or licensees) shall have any rights, either against us or our licensors, as a third party beneficiary of any rights, licenses, products or

services granted or provided by us to you hereunder. SmartDraw.com may freely assign or delegate this Agreement, in whole or in part. This License is personal to you, and you agree not to assign or delegate, in whole or in part, this License or any of your rights or obligations hereunder. Any assignment in violation of the foregoing restrictions shall be considered null and void.

U.S. Government Users. All software included in the Product and provided to the U.S. Government, including its civilian and military agencies, is commercial computer software that was developed at private expense prior to its provision to any U.S. Government entity. Subject to any applicable regulations set out in the FAR or DFARS (and any superseding regulations), the Product is provided with the commercial license rights and restrictions described elsewhere in this Agreement. For Department of Defense agencies, the restrictions set forth in the "Technical Data - Commercial items" clause at DFARS 252.227-7015 (Nov 1995) shall also apply. Contractor/manufacturer is SmartDraw.com, 9909 Mira Mesa Blvd., Suite 300., San Diego, CA 92131.

You agree that your use of the Product shall comply with all applicable laws and regulations. Without limiting the foregoing, you understand that the Product is subject to the export control laws and regulations of the U.S. or other applicable jurisdictions. You agree that you will not export or re-export the Product in violation of such laws or regulations.

You agree that SmartDraw.com or its designee may inspect your facilities, servers and computers to ensure that you are using the most recent version of the Product and to verify that you are in full compliance with this License (the "Inspection"). Such Inspection may be conducted by use of remote software monitoring tools. During the course of the Inspection, SmartDraw.com or its designee will not access any information other than the number of computers running the Product and the version number of the Product. All information and materials shall be treated as confidential, and will not be shared with any third parties without your written consent.

FURTHER RESTRICTIONS ON THE USE OF CLIPART, SYMBOLS, TEMPLATES, PHOTO OBJECTS AND PHOTOGRAPHIC IMAGES

This Product contains numerous clipart, symbols, templates and photo images (collectively referred to as the "Images"), which are either owned by SmartDraw.com or its licensors. As a user of this Product, you are free to use, modify and publish the Images as part of your own work product, subject to all of the restrictions set out below and elsewhere herein, and any additional conditions described in the credits dialog of certain symbol libraries. If you are uncertain as to whether your intended use is in compliance with the Guidelines set out below, we recommend that you seek the advice of your own attorney or legal counsel. SmartDraw.com will not provide you with an opinion as to whether your use is in compliance with these Guidelines.

A. YOU MAY, subject to any restrictions set out below and elsewhere herein:

1. incorporate any Image(s) into your own original work and publish, display and distribute your work in any media. You may not, however, resell, sublicense or otherwise make available the Image(s) for use or distribution separately or detached from your own work product or web page. For example, the Image(s) may be used as part of a web page design, but may not be made available for downloading separately or in a format designed or intended for permanent storage or re-use by others. Similarly, clients may be provided with copies of the Image(s) (including digital files) as an integral part of your work product, but

may not be provided with the Image(s) or permitted to use the Image(s) separately or as part of any other product.

2. make one (1) copy of the Image(s) as incorporated in the Product for backup or archival purposes.

B. YOU MAY NOT

1. create scandalous, obscene, defamatory or immoral works using the Image(s), nor use the Image(s) for any purpose that is prohibited by law.

2. use or permit the use of the Image(s) or any part thereof as a trademark or service mark, or claim any proprietary rights of any sort in the Image(s) or any part thereof.

3. use the Image(s) in electronic format, on-line or in multimedia applications unless the Image(s) are incorporated for viewing purposes only, and no permission is given to those viewing the Images to download and/or save the Image(s) for any reason.

4. rent, lease, sublicense or lend the Image(s), or a copy thereof, to another person or legal entity.

5. use any Image(s) except as expressly permitted by this License.

6. use any Image(s) that relate to identifiable individuals, products or entities in any manner that suggests their association with, or endorsement of, any product or service.

7. make a modification to a licensed image which would remove embedded copyright information from the image.

You acknowledge that neither SmartDraw.com, nor its principals, shareholders, officers, employees, contractors, affiliates, or licensors, are liable for any offensive, harmful, illegal, indecent, incorrect, incomplete or inaccurate data, information or materials either comprising, part of, or associated with any Image or collection of Images. You agree to defend, indemnify and hold harmless SmartDraw.com and its principals, shareholders, officers, employees, contractors, affiliates, and licensors, from any and all third party claims and damages arising from your breach of any of the restrictions set forth herein.



US: 800.847.7078
lifeboatdistribution.com

CANADA: 888.523.7777
www.lifeboat.ca